

What's New in Presstimator Version 7.1?

- **Rate Card** Version 7.1 includes a Rate Card option for setting the selling price for Quotes by accurately calculating the **First 1,000 and Additional 1000's** values for the initial job.
 - Set up different page counts and color scenarios to include on the Rate Card.
 - Export Rate Card into a new Quote.
 - Track the accuracy of your **Rate Card** estimates using the **Estimate Analysis and Profit Analysis Reports**.
 - Track your goals and projections using the **Customer Trends Report**.

Rate Card [Close]

Details

Copies: Pages: Format: Sections: Color Ink: Plant:

Information

Quantity Requested: Additional Charge:

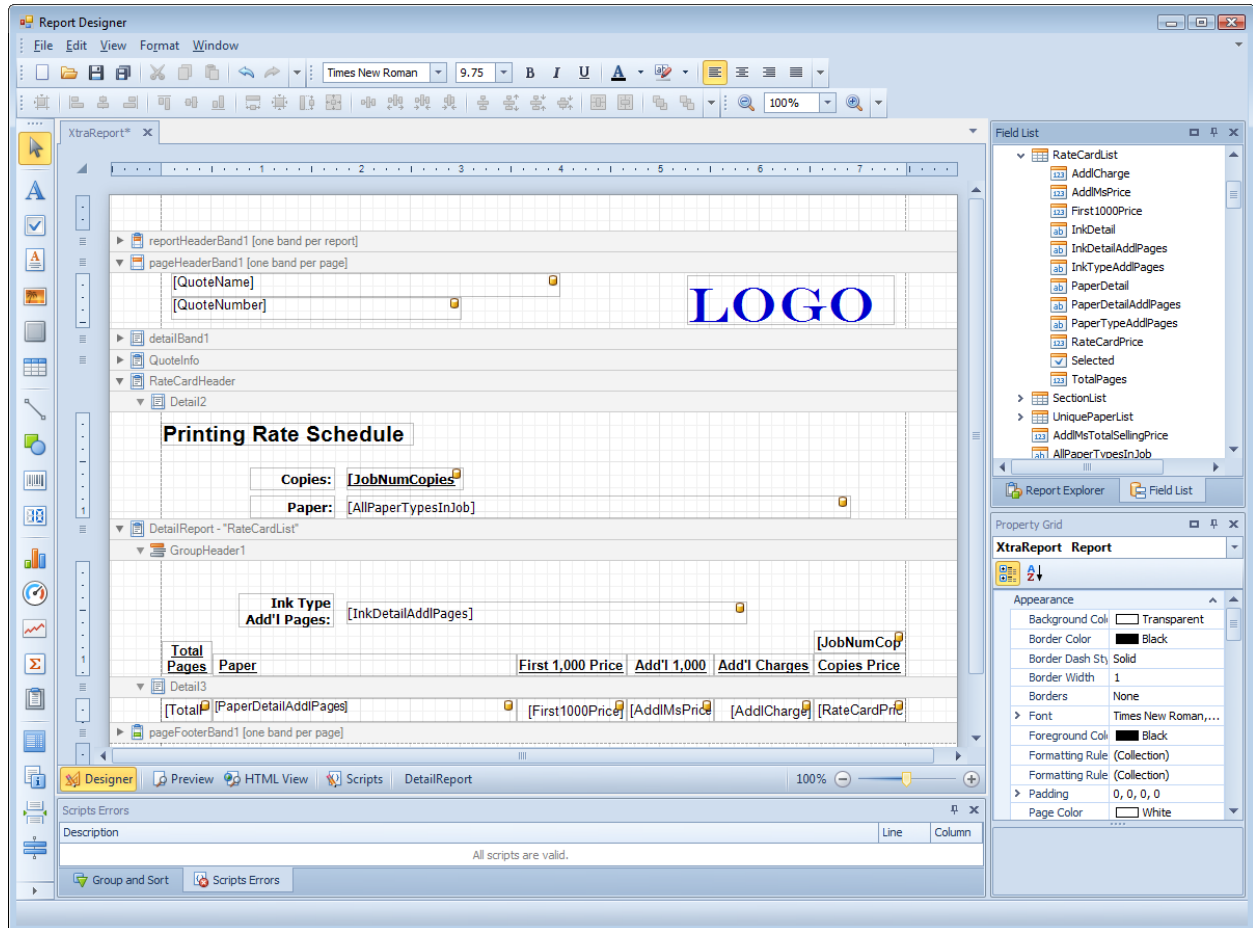
Rate Card Entry

Selected Paper Info: First 1,000 Price:
 Total Pages: Ink Info: Additional 1,000's Price:
 Additional Charge:
 Total Price for Copies:

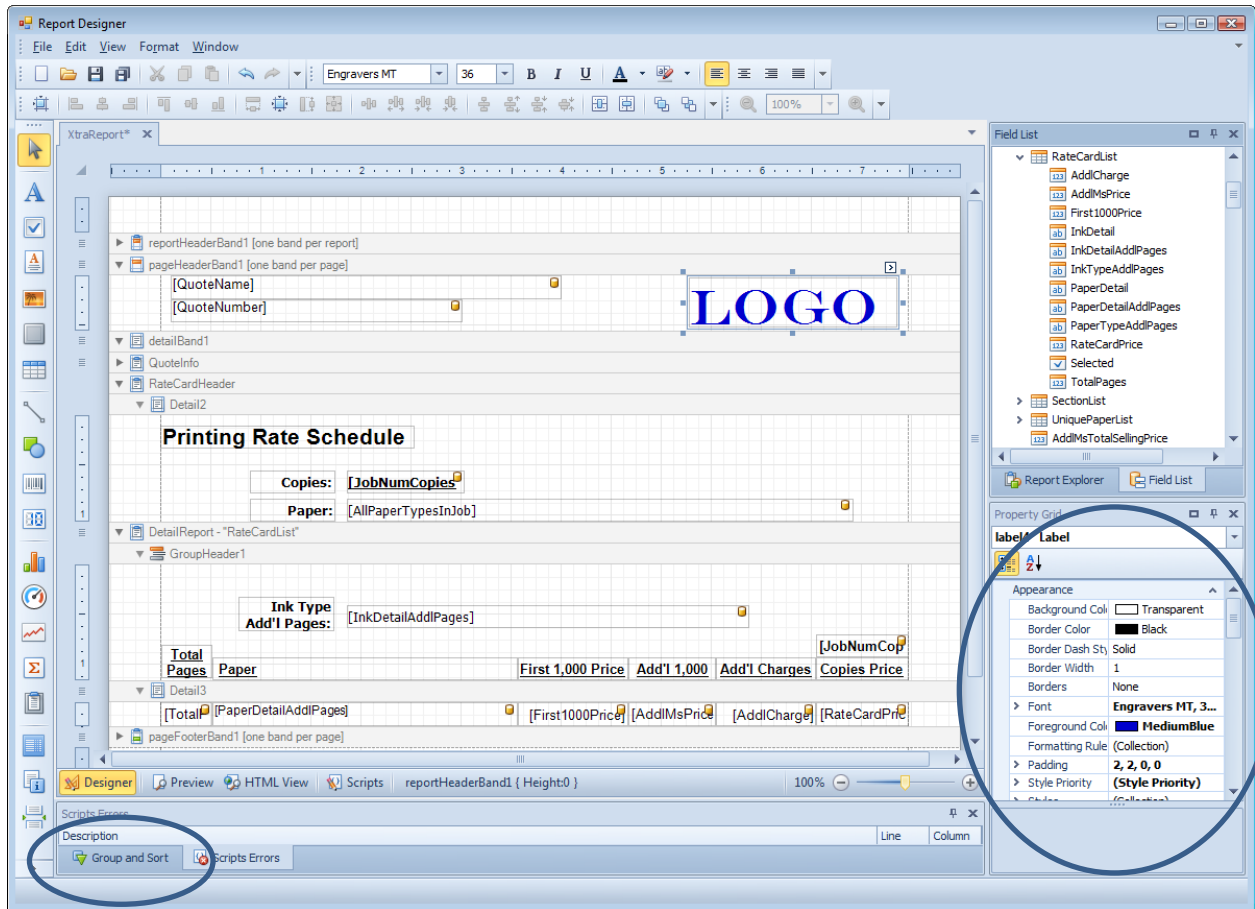
Rate Card Summary

Selected	Pages	Ink	Paper	First 1,000	Add'l M's	Add'l \$	Price
<input checked="" type="checkbox"/>	8	Process color	30# White Newsprint	926.49	40.37		1289.82
<input type="checkbox"/>	12	Process color	30# White Newsprint	1104.70	53.03		1581.97
<input type="checkbox"/>	12	Process color + 4 pgs. Black Only	30# White Newsprint	1005.34	52.37		1476.67
<input type="checkbox"/>	16	Process color	30# White Newsprint	1193.51	65.68		1784.63
<input type="checkbox"/>	16	Process color + 8 pgs. Black Only	30# White Newsprint	1061.81	64.37		1641.14
<input type="checkbox"/>	20	Process color	30# White Newsprint	1371.81	78.33		2076.78
<input type="checkbox"/>	20	Process color + 12 pgs. Black Only	30# White Newsprint	1140.66	76.37		1827.99

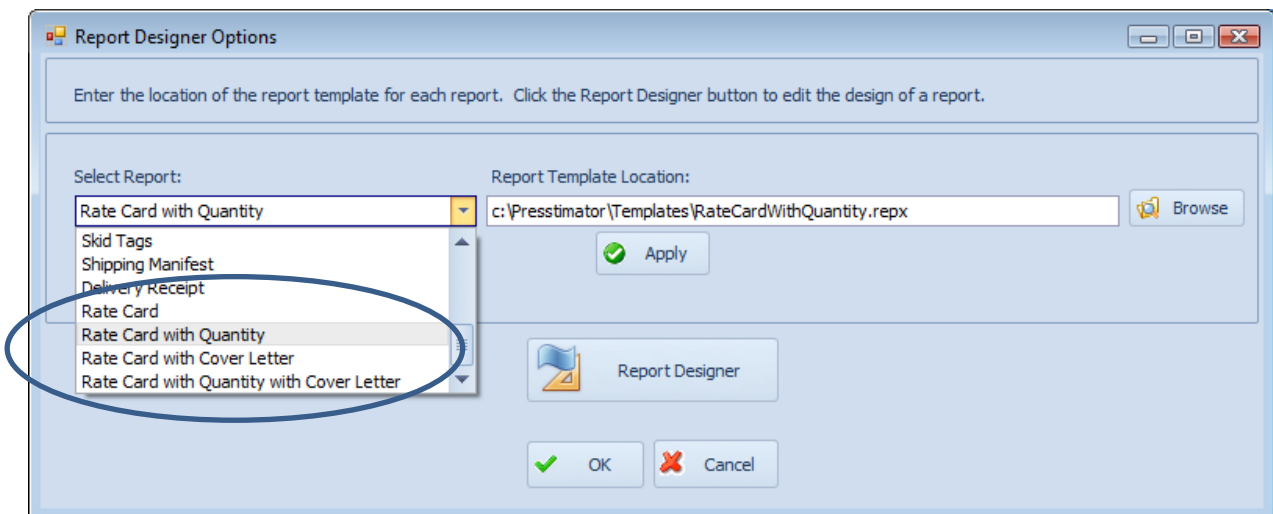
- Rate Card Reports** Use one of the four templates to generate a Rate Card for your customer. To create your own template, use the simple drag-and-drop functionality in the report designer tool to design new report templates for your Rate Card or to replicate your current reports. When generating reports, the selected template is loaded and information is filled in automatically.



- Select Fonts, Colors, Sizes, or any other formatting Styles to design your custom Rate Card report. Your reports can include complex features such as Sorting, Grouping, Scripting, Calculations and custom fields with combined information and totals.



- Four default Rate Card templates are included and you can modify these by placing various built-in controls like text, pictures, charts, grids, etc. onto the report template to include your logo or company information.



The non-editable reports generated from your customized templates are displayed in a Print Preview window where they are ready for PDF creation, email or exporting.

Rate Card

LOGO

Printing Rate Schedule

Copies: 10,000
Paper: 30# White Newsprint

Ink Type: Black Only
Add'l Pages: 10,000

Total Pages	Paper	First 1,000 Price	Add'l 1,000	Add'l Charges	Copies Price
12	30# White Newsprint	1,005	52.37	0.00	\$1,477
16	30# White Newsprint	1,062	64.37	0.00	\$1,641
20	30# White Newsprint	1,141	76.37	0.00	\$1,828

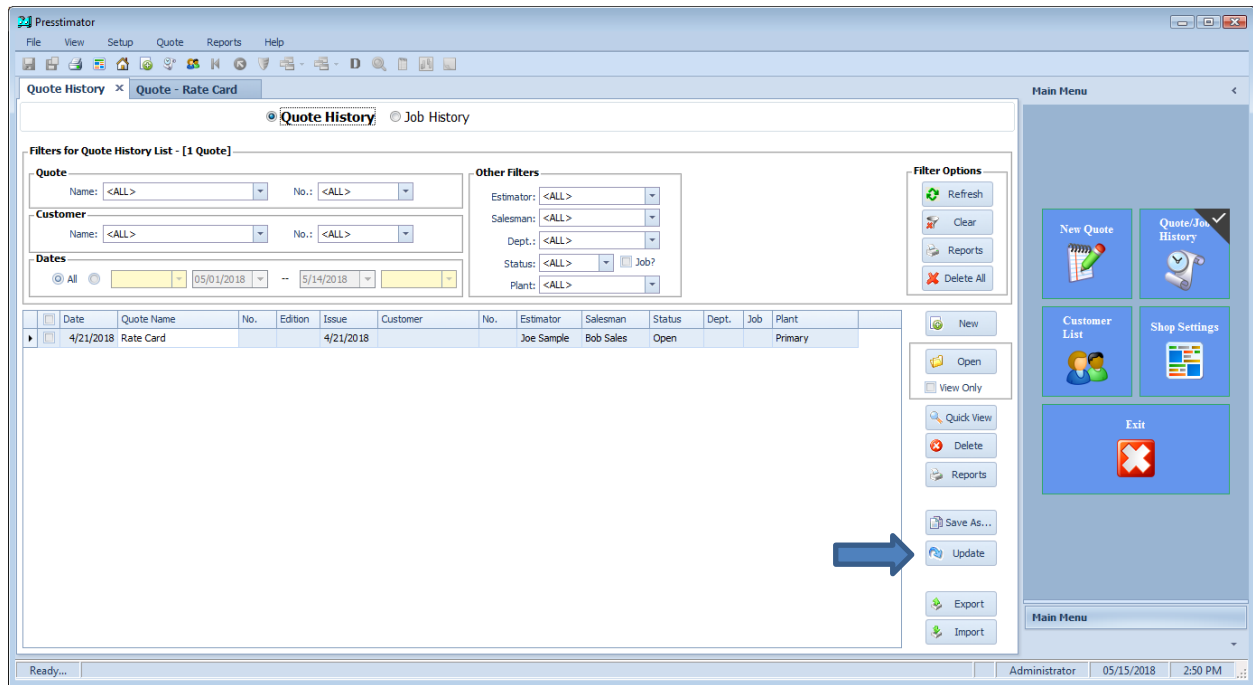
Ink Type: Process color
Add'l Pages: 10,000

Total Pages	Paper	First 1,000 Price	Add'l 1,000	Add'l Charges	Copies Price
8	30# White Newsprint	926	40.37	0.00	\$1,290
12	30# White Newsprint	1,105	53.03	0.00	\$1,582
16	30# White Newsprint	1,194	65.68	0.00	\$1,785
20	30# White Newsprint	1,372	78.33	0.00	\$2,077

Company Name, 101 Main Street Phone: (714) 123-4567 Tuesday, May 15, 2018 Page 2 of 2

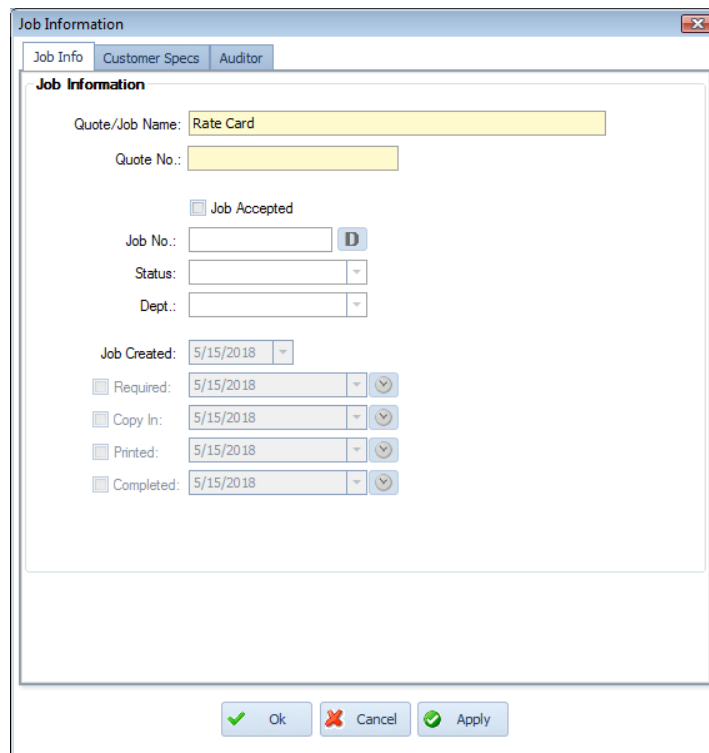
Page 2 of 2 73%

- **Update Button** The “Update” button from the Quote History or Job History screens allows users to enter a variety of information regarding quote or job status without having to open a Quote and be trained to use the Presstimator.



Once the estimator is done working out the costs for a job, other users can update the information by navigating through the Tabs on the Job Information screen.

The **Job Info** Tab allows the user to update the job status as it continues through the shop.



The **Customer Specs** Tab allows the user to select a customer and modify the page count and total number of copies requested. If the estimator set up Multiple Page Count scenarios, one of those entries can be selected as the number of pages for the job by using the Selector button (blue 's' icon). The total number of pages can be modified from this screen only if the estimator has used the Multiple Page Counts feature to determine the paper stock, color ink, etc. for the additional pages.

For example: The estimator creates a Quote for an 8-page Broadsheet, but also creates Multiple Page Count entries for 12-page and 16-page products. Clicking on the Selector button allows the user to select the 8, 12 or 16 page estimate to be used as the number of pages for the current Quote.

In the Defaults area, the user can choose to update the Quote with any new costs/standards that may have been updated in Shop Settings to be sure this Quote reflects all current information, or keep the Quote "frozen in time" with costs/standards from when it was first created.

In the Pricing area, the user can also choose whether to recalculate the Quote to update the estimate based on the newly entered information, keep the original selling price quoted by the estimator, or calculate based on the selected Rate Card.

The screenshot shows a software window titled "Job Information" with three tabs: "Job Info", "Customer Specs", and "Auditor". The "Customer Specs" tab is active. The form contains the following fields and options:

- Quote/Job Name:
- Quote No.:
- Title:
- Edition: Issue:
- Customer Name:
- No. Copies:
- Total no. of pages:

Defaults

- Import ALL current costs/settings from Shop Settings into Quote
- Update Paper Waste with current values from Shop Settings
- Update Press Make-Ready with current values from Shop Settings
- Update Press IPH with current values from Shop Settings

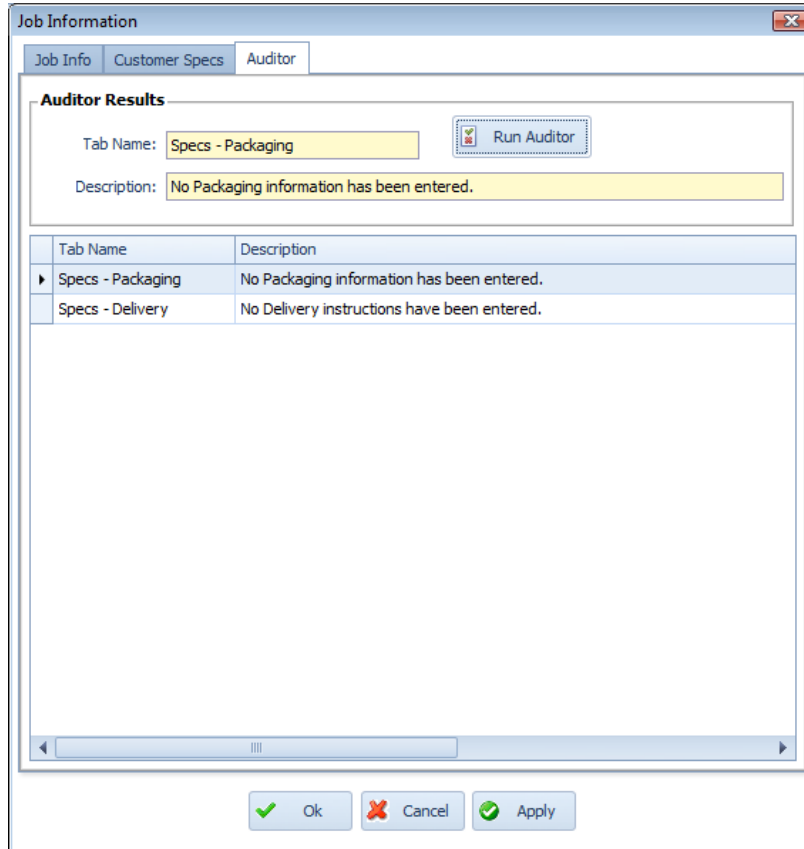
Pricing

- Keep calculated price from original Quote
- Recalculate price based on updated copies and pages
- Use Rate Card

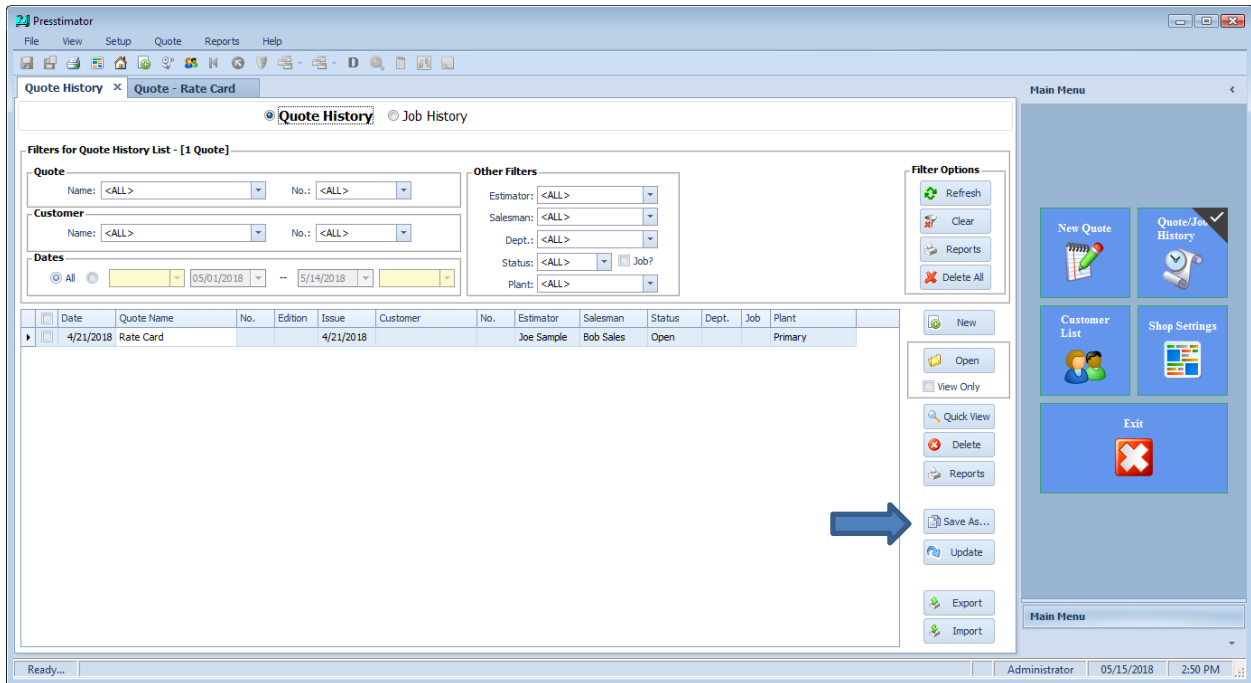
At the bottom of the window are three buttons:

Finally, the **Auditor** Tab will run the Auditor using the newly updated Quote information. If the user enters a quantity or selects page count that would require additional information for the estimator to enter, the Auditor will bring those issues to the user's attention.

For example, if the number of copies has been increased, but all copies are not being shipped to the same destination, then the estimator needs to update the Quote with shipping information for the additional copies.



- The “Save As” button from the Quote History or Job History screen will allow the user to duplicate the Quote that is currently highlighted, allowing the user to make modifications to the new Quote without changing the original Quote.



Enter a New Quote Name and Number (or use the Default button to get the next sequential number from Shop Settings) and Save the Quote. When you return to the Quote History screen, you can click the “Update” button to quickly make any changes to the duplicated Quote.

