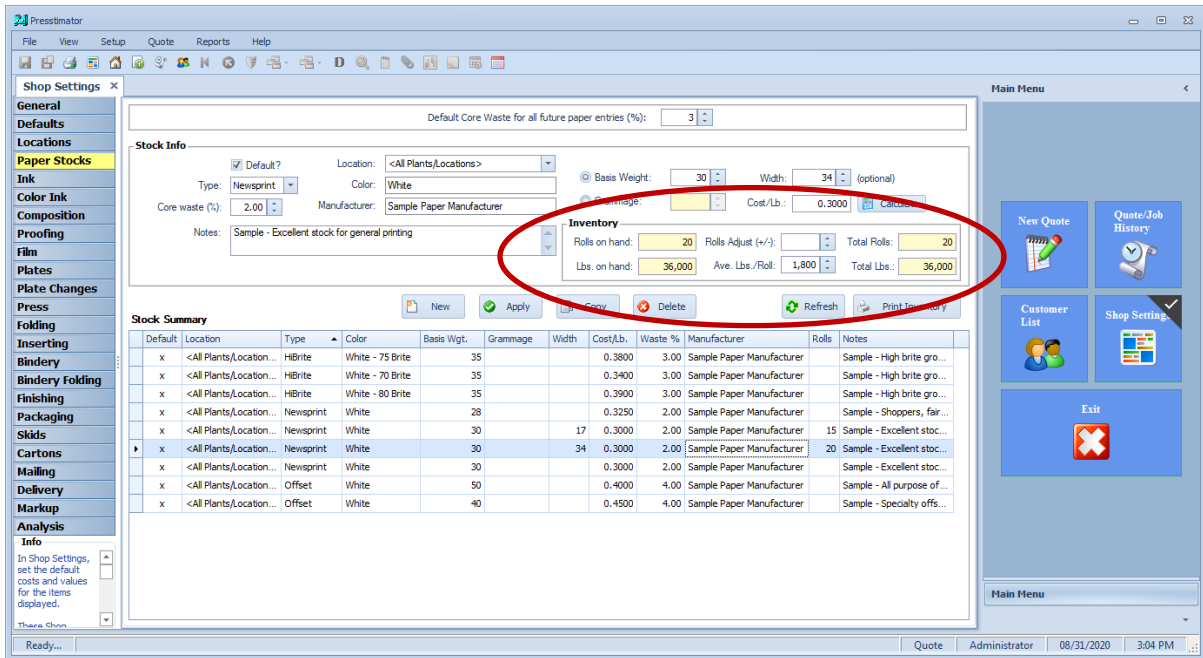


Paper Inventory

Users can enter the number of rolls on hand of each type of paper in Shop Settings. Easily adjust the number of rolls when receiving shipments from your paper vendor(s) to maintain an overall number of rolls in inventory. When completing a Job in the Presstimator, the number of rolls in inventory will be automatically reduced by the calculated number of rolls required to produce the job. The Materials Report will calculate how many rolls are required to print a job. The Auditor will catch if you don't have enough rolls on hand and need to order more paper. Optional interfaces (standalone Windows app or browser-based) are available so the inventory can be adjusted by employees without a need to be trained on the Presstimator.



To help fill out this information initially, use the 'Print Inventory' button to print out a list of the stocks listed in Shop Settings.

The printed Paper Stock Inventory includes a blank column for you to enter in a physical count number from your warehouse and a column to enter the roll weight as listed directly on the rolls.

Paper Stock Inventory												
Location	Manufacturer	Type	Color	BW	GSM	Width	Notes	Core Wst%	Cost/Lb.	Average Lbs/Roll	Rolls on Hand	Count
<All Plants/Locabons>	Sample Paper Manufacturer	Newsprint	White	28			Sample - Shoppers, fair opacity and good brightness	2.00	\$.3250			
<All Plants/Locabons>	Sample Paper Manufacturer	Offset	White	50			Sample - All purpose offset	4.00	\$.4000			
<All Plants/Locabons>	Sample Paper Manufacturer	HiBrite	White - 75 Brite	35			Sample - High brite groundwood	3.00	\$.3800			
<All Plants/Locabons>	Sample Paper Manufacturer	Newsprint	White	30		17	Sample - Excellent stock for general printing	2.00	\$.3000	900	15	
<All Plants/Locabons>	Sample Paper Manufacturer	Newsprint	White	30		34	Sample - Excellent stock for general printing	2.00	\$.3000	1,800	20	
<All Plants/Locabons>	Sample Paper Manufacturer	Offset	White	40			Sample - Specialty offset, fair opacity	4.00	\$.4500			
<All Plants/Locabons>	Sample Paper Manufacturer	HiBrite	White - 70 Brite	35			Sample - High brite groundwood	3.00	\$.3400			
<All Plants/Locabons>	Sample Paper Manufacturer	HiBrite	White - 80 Brite	35			Sample - High brite groundwood	3.00	\$.3900			
<All Plants/Locabons>	Sample Paper Manufacturer	Newsprint	White	30			Sample - Excellent stock for general printing	2.00	\$.3000			

Within a Quote, the Paper Tab has a calculator to show you how many rolls of each stock will be needed.

The screenshot shows the Presstimator software interface. The main window displays a quote for 'Sample Quote' with the following details:

- Details:** Copies: 32,500, Pages: 52, Format: Tab, Sections: 2, Color Ink: Yes, Plant: Primary
- Stock Entry:** Sect: 2, Pgs: 32, Basis Wgt.: 30, Run waste (%): 2.00, OverRun Imp.: 200, Finishing (%): , Plate Life Waste: , Waste Calculator button.
- Summary:** Base Copies: 32,500, Lbs. w/o waste: 6,983, Add'l copies: , Lbs. waste: 545, Waste copies: 1,850, Lbs. waste (%): 7.528, Gross Copies: 34,350, Total Lbs.: 7,528 (circled in red), Gross Impress.: 34,350, Cost (per M): .3000, Core waste (%): 2.00, Cost: \$2,258.40
- Stock Summary Table:**

S.	Pgs.	Type	Color	BW	GSM	Width	Start	Run	ORun	Copies	Core	Waste Lbs.	Lbs.	Cost/Lb.	Cost	Notes				
1	4	Offset	White	50		17	3500	8.00	200	39125	4.00	334	1657	.4000	662.80	50# wrap on cover				
1	16	Newsprint	White	30		34	3500	8.00	200	39125	2.00	796	4287	.3000	1286.10					
2	32	Newsprint	White	30		34	1000	2.00	200	34350	2.00	545	7528	.3000	2258.40					
													52			1,675	13,472		4,207.30	
- Totals:** Paper cost: \$4,207 for 32,500 copies, Paper cost (per M): \$129.46, Paper cost w/ plate changes: \$4,287

In this example, a total of 7,528 lbs. of this Newsprint will be needed. Therefore, you will need 5 rolls of this Newsprint as indicated on the calculator screen displayed.

The 'Paper Rolls' calculator dialog box displays the following information:

- Total Weight:** 7,528
- Weight/Roll:** 1,800
- Total Rolls:** 5

Notes:

- Note: Total Cost is calculated on the amount used.
- Total Cost is NOT based on total number of full rolls.
- Does NOT include any additional paper needed for plate changes.
- See Materials Report for all-inclusive number of rolls calculations.

OK

To get a comprehensive report of the number of roll for all paper stocks included in a job, print the Materials Report for the Quote. The report displays the number of rolls required for each Section and Paper Stock selected.

Job: Sample Quote - Multiple Sections
No.: 002
Date:

Copies: 32,500 **Pages:** 52 **Format:** Tab **Sections:** 2 **Color Ink?** **Plant:** Primary

Paper (by Section)

S.	Pages	Type	Color	Manufacturer	BW	GSM	Width	Startup	Run Wst %	Over Run	Finish Wst %	*Copies	*Total Lbs.	*Rolls
1	4	Offset	White	Sample Paper Manufacturer	50		17 +	3,500	8.00	200	1.00	40,725	1,725	2
1	16	Newsprint	White	Sample Paper Manufacturer	30		34	3,500	8.00	200	1.00	40,725	4,462	3
2	32	Newsprint	White	Sample Paper Manufacturer	30		34	1,000	2.00	200	.00	34,350	7,528	5

+ indicates this stock is a partial web or may include a partial web
 * includes any additional amounts required by plate changes.

Paper Totals (by Web Width)

Total Pages	Type	Color	Manufacturer	BW	GSM	Width	Total Lbs.	Rolls Required	Rolls on Hand
48	Newsprint	White	Sample Paper Manufacturer	30		34	11,990	8	20
4	Offset	White	Sample Paper Manufacturer	50		17	1,725	2	5

Paper Totals

Total Pages	Type	Color	Manufacturer	BW	GSM	Width	Total Lbs.	Rolls Required	Rolls on Hand
48	Newsprint	White	Sample Paper Manufacturer	30		34	11,990	8	20
4	Offset	White	Sample Paper Manufacturer	50		17	1,725	2	5

+ indicates this stock is a partial web or may include a partial web



From the Materials Report, you can see that a total of 8 rolls of the selected Newsprint will be required to complete the product and that you have 20 rolls on hand.

Note: If you do not have enough rolls on hand in Shop Settings for this Newsprint, the Auditor will include a warning message that you will need to order more paper.